

# CS POWER Generator

EFFICIENT POWER GENERATION  
INSPIRED BY GREEN ENVIRONMENT



**Power  
Systems**

Powered by Cummins

POWER GENERATOR

PRIME POWER 20-2000KVA



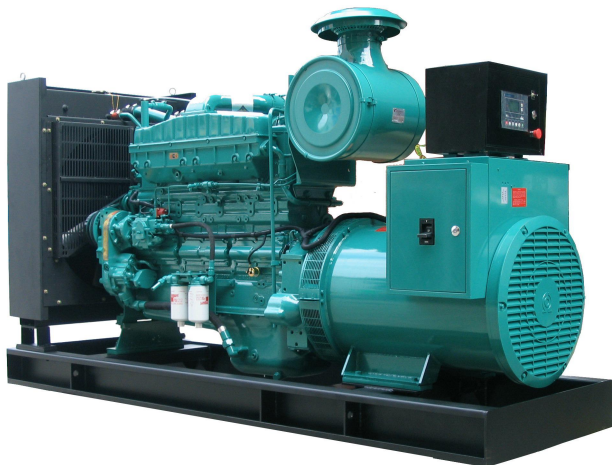
## ABOUT CUMMINS

### Cummins - World Class Engine Maker

Cummins is a global power leader, designs, sells & services including fuel system, control system, air inlet treatment, filtration, waste air treatment and diesel engines & related technology around the world, headquartered in Columbus, Indiana. It is one of the first western companies that enters into China.

Dongfeng Cummins Engine Co., Ltd is a modernized engine manufacturing company joint-ventured & established by Dongfeng Motor Group Company Limited and Cummins Inc, mainly produces Mechanical, ISBe, ISDe and ISLe Series fully electrically controlled B, C, L Series with diesel engines and B, L Series natural gas engines. Capacity covers from 125-375HP.

Chongqing Cummins Engine Co., Ltd is joint-ventured with U.S Cummins Inc, mainly produces N.K.M11 series with world's leading U.S Cummins technology, high speed high capacity diesel engines, diesel generator sets and marine generator sets. Capacity covers from 145-1343HP.



## » Main Business

Diesel Generating Sets & Low Voltage Switchgear



Open Generating Sets



Soundproof Generating Sets



Containerized Power Plant



Mobile Generating Sets



Lighting Tower



Rental type





## Cummins Series Specification

50Hz @ 1500RPM 30-2250KVA



### Features and Benefits

#### Features

- Compact structure and mature design
- Good cooling system
- LED digital display and modular control
- Multiple safety measures
- Rigorous factory test
- Attach noise protection box according needs

#### Benefits

- Beautiful appearance and small size
- Adapt to various complex environment
- User-friendly design and simple operation
- People-oriented and safety first
- Quality assurance
- Detachable box to facilitating maintenance

50Hz @ 1500RPM 30-2250KVA



### Features and Benefits

#### Features

- Compact structure and mature design
- Good cooling system
- LED digital display and modular control
- Multiple safety measures
- Rigorous factory test
- Attach noise protection box according needs

#### Benefits

- Beautiful appearance and small size
- Adapt to various complex environment
- User-friendly design and simple operation
- People-oriented and safety first
- Quality assurance
- Detachable box to facilitating maintenance

## Power by Cummins Engines (30-413KVA)

Three-Phase, 50Hz@1500PRM

Genser Specification 400/230V <sup>(1)</sup>				Engine specification						
Genset Model	KVA		Cons 100% (L/H)	Open sets dBA@7m	Engine Model	Cyl	Gov	Displacement (L)	Dimension LxWxH (mm)	Weight (kg) <sup>(2)</sup>
ESP	PRP									
LG22C	22	20	7.5	≤96	4B3.9G2	4L	ECR	3.9	1750x970x1530	980
LG33C	33	30	10.3	≤96	4BT3.9G2	4L	ECR	3.9	1750x970x1530	980
LG55C	55	50	12	≤96	4BTA3.9-G2	4L	ECR	3.9	1850x970x1530	1070
LG66C	66	60	13	≤96	4BTA3.9-G2	4L	ECR	3.9	1850x970x1530	1070
LG94C	94	85	22	≤96	6BT5.9-G1	6L	ECR	5.88	2150x1030x1580	1200
LG110C	110	100	22	≤96	6BT5.9-G2	6L	ECR	5.88	2150x1030x1580	1200
LG125C	125	113	27	≤96	6BTA5.9-G2	6L	ECR	5.88	2150x1030x1580	1400
LG138C	138	125	30	≤96	6BTA5.9-G2	6L	ECR	5.88	2320x1030x1580	1400
LG150C	150	138	30	≤96	6BTA5.9-G2	6L	ECR	5.88	2320x1030x1580	1500
LG175C	175	160	40	≤96	6CTA8.3G2	6L	ECR	8.3	2440x980x1710	1500
LG206C	206	188	40	≤96	6CTA8.3G2	6L	ECR	8.3	2440x980x1710	1600
LG220C	220	200	45	≤96	6CTA8.3G2	6L	ECR	8.3	2520x980x1760	1700
LG275C	275	250	53	≤100	6LTA8.9G2	6L	ECR	8.9	2570x1140x1680	2300
LG275C1	275	250	67	≤100	MTA11-G2A	6L	ECR	10.8	2650x1100x1820	3100
LG313C	313	275	84	≤100	NTA855-G1A	6L	ECR	14	3050x1100x1820	3300
LG350C	350	313	94	≤100	NTA855-G1B	6L	ECR	14	3070x1260x1770	3300
LG350C1	350	313	62	≤100	MTA11-G3	6L	ECR	10.8	2650x1100x1820	3100
LG388C	388	350	94	≤100	NTA855-G2A	6L	ECR	14	3070x1260x1770	3350
LG388CA	388	350	97	≤100	NTA855-G4	6L	ECR	14	3130x1260x1770	3450
LG413C	413	375	101	≤100	NTAA855-G7	6L	ECR	14	3220x1260x1820	4800

(1) Also available in the following voltages: 254/440V, 240/416V, 230/400V, 220/380V, 127/220V, 115/200V, 110/190V  
(2) The weights approximate and without fuel.

\*Ambient reference conditions: 1.000 mbar, 40°C, 30% relative humidity. Rating according to ISO 3046 and 8525

## Power by Cummins Engines (440-2250KVA)

Three-Phase, 50Hz@1500PRM

Genser Specification 400/230V <sup>(1)</sup>				Engine specification						
Genset Model	KVA		Cons 100% (L/H)	Open sets dBA@7m	Engine Model	Cyl	Gov	Displacement (L)	Dimension LxWxH (mm)	Weight (kg) <sup>(2)</sup>
ESP	PRP									
LG440C	440	400	121	≤100	NTAA855-G7A	6L	ECR	14	3220x1260x1820	4850
LG500C	500	450	135	≤100	KTA19-G3	6L	ECR	18.9	3390x1450x2100	4900
LG550C	550	500	148	≤100	KTA19-G4	6L	ECR	18.9	3390x1450x2100	4900
LG625C	625	575	162	≤100	KTA19-G5	6L	ECR	18.9	3590x1680x2200	4950
LG650C	650	600	168	≤100	KTA19-G8	6L	ECR	18.9	3590x1680x2200	4800
LG688C	688	625	168	≤100	KTA19-G6A	6L	ECR	18.9	3590x1680x2200	4950
LG688CA	688	625	175	≤100	KTA19-G7	6L	ECR	18.9	3590x1680x2200	4950
LG713C	713	650	143	≤100	QSKTAA19-G3	6L	EUI	19	3610x1550x2100	4950
LG825C	825	750	167	≤102	KTA38-G2	12V	ECR	37.8	4440x1750x2430	7850
C825	825	750	150	≤102	VTA28-G6	12V	EUI	28	4450x1750x23500	7850
LG880C	880	800	172	≤102	KTA38-G2B	14V	ECR	38	4440x1750x2350	7850
C880	880	800	161	≤102	QSK23-G3	13V	EUI	23	4440x1750x2350	7950
LG1000C	1000	900	191	≤102	KTA38-G2A	15V	ECR	37.8	4440x1750x2430	8000
LG1100C	1100	1000	209	≤103	KTA38-G5	16V	ECR	37.8	4380x2080x2570	9800
C1130	1130	1000	192	≤103	QST30-G4	17V	EUI	37.8	4440x1750x2350	8230
LG1250C	1250	1135	236	≤103	KTA38-G9	18V	ECR	38	4450x1750x2350	9800
LG1375C	1375	1250	254	≤103	KTA50-G3	19V	ECR	50.3	4989x2080x2282	10100
C1410	1410	1250	254	≤103	KTA50-G3	20V	ECR	51	4989x2080x2282	10100
LG1675C	1675	1400	289	≤103	KTA50-G8	21V	ECR	50.3	4989x2080x2282	12000
C1675	1675	1500	299	≤103	KTA50-G8	23V	ECR	50.3	5811x2033x2756	10600
LG1675CA	1675	1500	299	≤103	KTA50-G8	22V	ECR	50.3	4450x1750x2352	12000
C2250	2250	2000	369	≤103	QSK60-G4	24V	EUI	60.2	6000x2260x2780	14200

(1) Also available in the following voltages: 254/440V, 240/416V, 230/400V, 220/380V, 127/220V, 115/200V, 110/190V  
(2) The weights approximate and without fuel.

\*Ambient reference conditions: 1.000 mbar, 40°C, 30% relative humidity. Rating according to ISO 3046 and 8525



# Production Line



# INCREASED SAFETY

Lega power has been passed ISO9000 certification by UJAS in 2002  
*Generating Better Life!*

A large image showing a welder in protective gear working on a metal structure, with bright sparks flying. In the foreground, a blue industrial engine is mounted on a white metal frame.