

Regent pumps

found since 1948

Vertical Multistage Pumps

RSV SERIES



Building Services



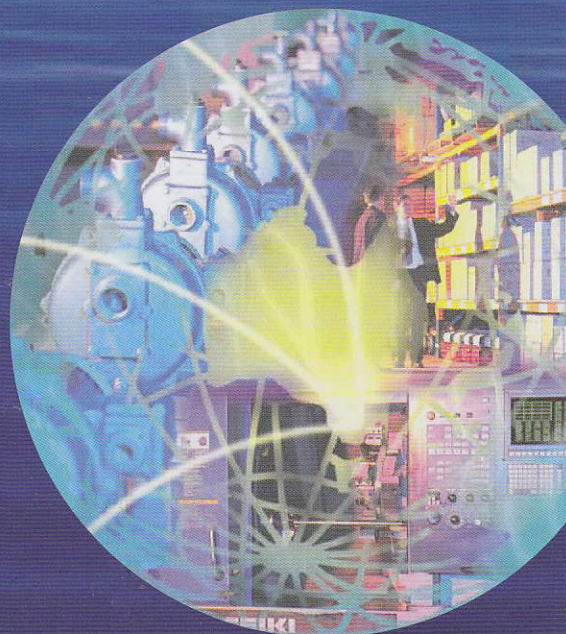
Industrial



Irrigation

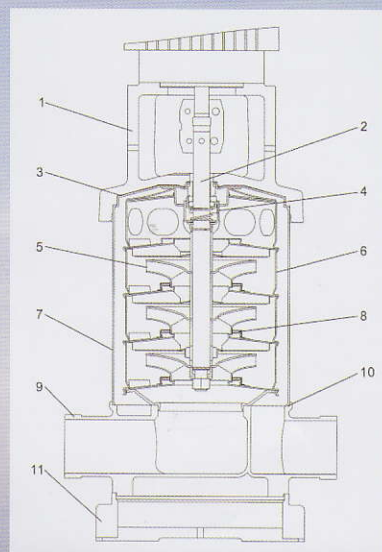


Reliable Choice

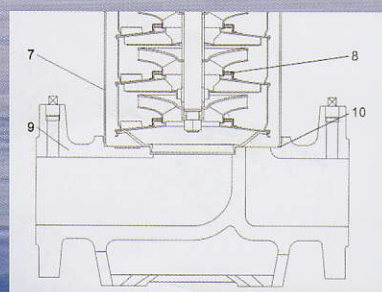


RSV 'SERIES - VERTICAL MULTISTAGE PUMP

Sectional Drawing



Pipe Threads Inlet/Outlet



Flange Inlet/Outlet

Item	Part Description	Material	DIN Standard
1	Motor Base	Cast Iron	GG20
2	Shaft	Stainless Steel SS304 Stainless SS316	1.4301 1.4401
3	Pump Top Casing	Cast Iron	GG20
4	Mechanical Seal	Silicon Carbide/Carbon/EPDM	
5	Impeller	Stainless Steel SS304	1.4301
6	Diffuser	Stainless Steel SS304	1.4301
7	Outer Cylinder	Stainless Steel SS304	1.4301
8	Sleeve	Stainless Steel SS304	1.4301
9	Pump Inlet / Outlet Header	Cast Iron Stainless Steel SS304	GG20 1.4301
10	Elastomer	EPDM	
11	Pump Base	Cast Iron	GG20

Main features of Vertical Multistage Pump.

The series of multistage centrifugal vertical pumps has been designed and produced with exclusive technical features.

- All wet metal parts in STAINLESS STEEL AISI 316L.
- The possibility of a choice between:
 - i) The standard version with delivery and suction ports in line, round flanges.
 - ii) A special version with in line ports and Victualic connections.
- Seals according to DIN 24960.
- Easy to maintain.
- Upper housing designed to ensure that air does not stagnate in the most crucial seal area.
- Minimum axial thrust permitting the use of a standard motor.
- Higher efficient and silent. (Eff. 65% or higher)
- High level of reliability.
- Supplied with standard counterflanges.

Usage Limitations.

Maximum operating pressure:

- Standard range 16 - 25 bar

Maximum temperature of liquid: from -25oC to + 120oC

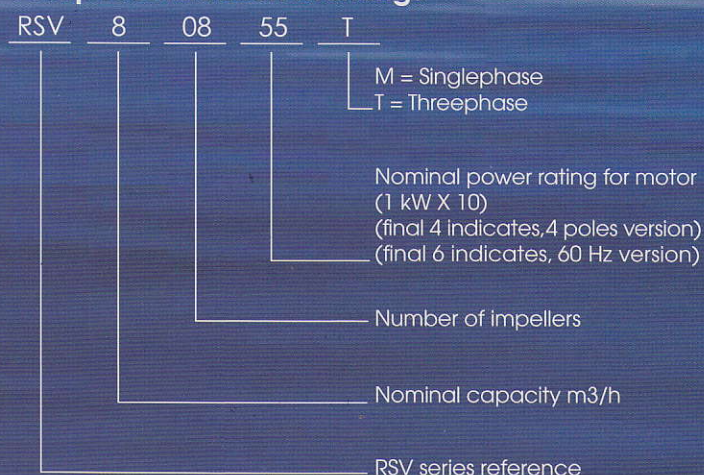
Testing

- According to ISO 2548 for standard pumps, class C or equivalent.

Motor.

- Asynchronous electric motor with enclosed stator and external ventilation.
- Main dimensions are in accordance with the provisions of DIN and IEC standard.
- Class F Insulation.
- Level of protection IP 55.
- Maximum enviromental temperature.
- Speed of rotation 2900 rpm.

Pump identification markings



RSV 'SERIES - VERTICAL MULTISTAGE PUMP

APPLICATIONS



WATER SUPPLY

- ☐ Main water supply system for water utilities and distribution networks.
- ☐ Water pressure boosting system for multi-storey building, hotels, camping site, schools, etc



INDUSTRY

- ☐ Water supply system for food industry, example - slaughterhouses, dairies, breweries, hotel, etc
- ☐ Pharmaceutical and metal industries where water pressure boosting is essential part of the process.
- ☐ Fire - fighting



IRRIGATION

- ☐ Irrigation for play ground, golf courses, farm, etc
- ☐ Parks and other recreational
- ☐ Wine yards

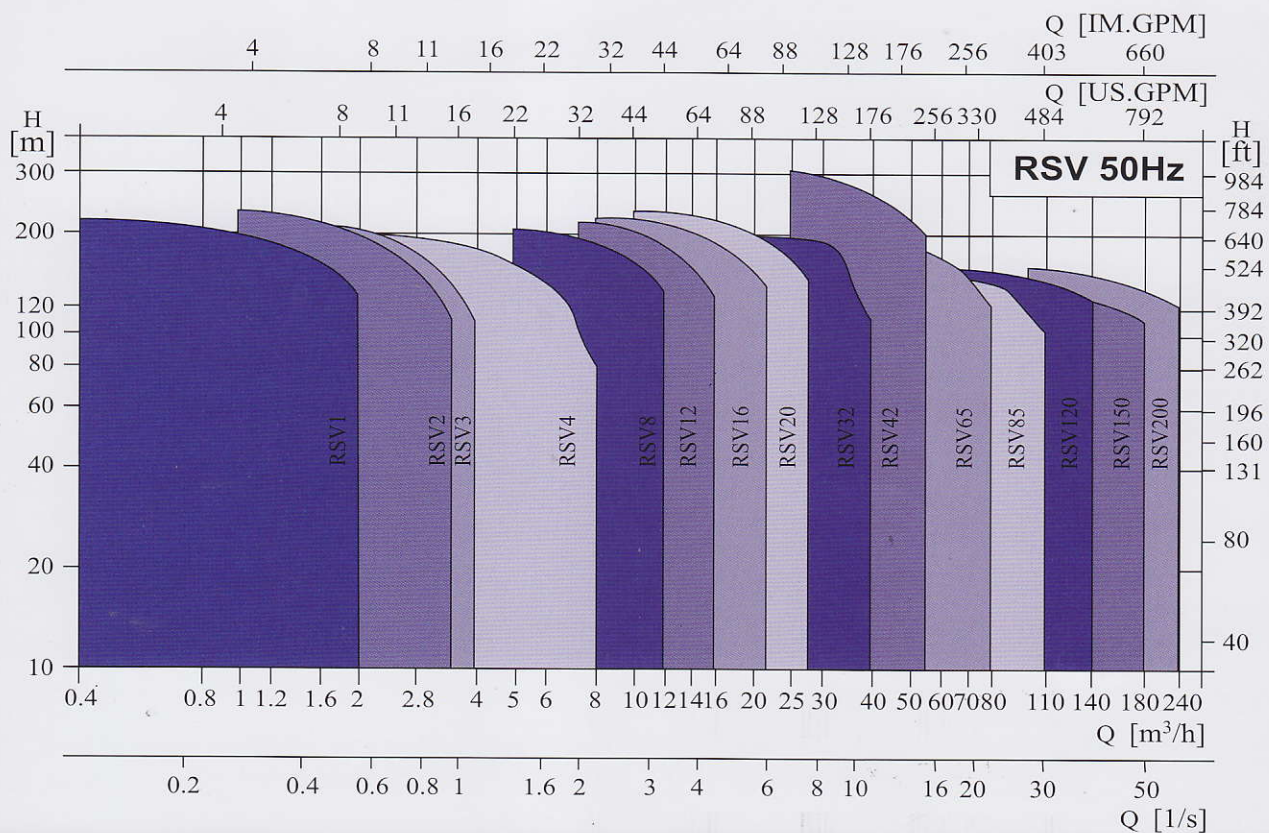
Operating Parameters

- ☐ Thin, clean, non-aggressive liquids which do not contain solid particles or fibres.
- ☐ Maximum Flow - 240 m³/hr
- ☐ Maximum Head - 320 Metres
- ☐ Liquid Temperature - 0 to +70 °C
- ☐ Minimum Inlet Pressure - In according to the NPSH Curve plus a safety margin of the minimum 0.5 metresHead

Electric Motor

- Up to 2.2kW available Single Phase (220~ 240V) or Three Phase 380~415V 50Hz / 60Hz
- 3.0kW and above , only 3 Phase 380~415V available
- TEFC
- IP55
- S1 Duty
- IE 2 and IE3 High Efficiency for 3 Phase motor available on request
- 11kW and above - Motor fitted with 3 x PTC (Windings over temp protection one per phase).

Performance curves



VARIOUS TYPE OF SYSTEM

✓ Quality

✓ Reliability

✓ Quick Delivery

✓ Customer Specific

Main Components



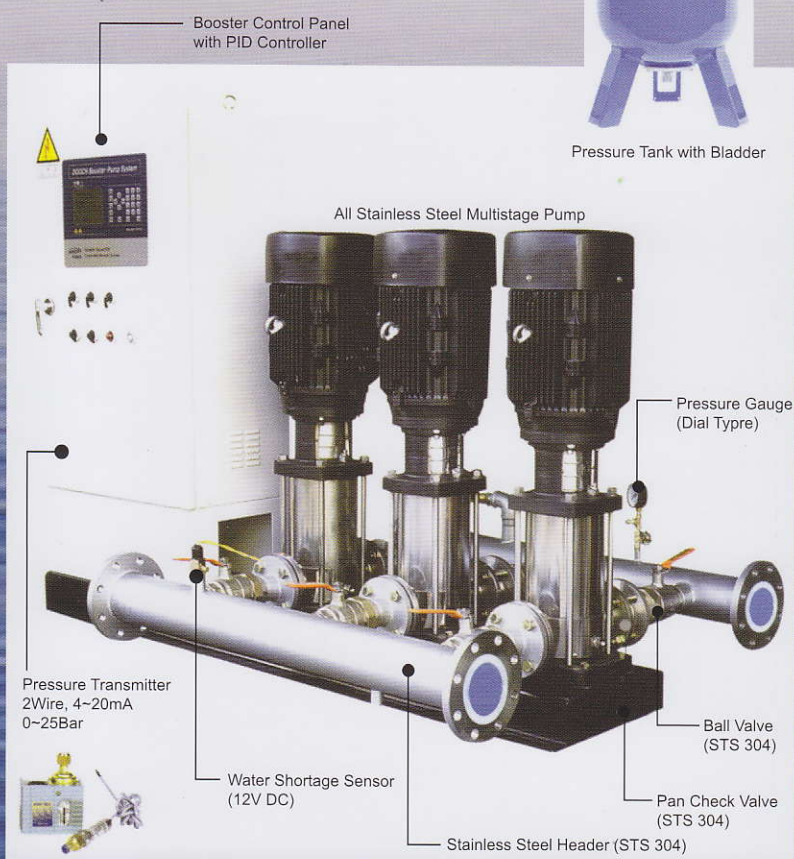
■ PID Controller
(LCD Display)



■ PID Controller Board



Pressure Tank with Bladder



Available From

Regent pumps
found since 1948

1-7 Redwood Drive
Dingley, Victoria 3172
Australia

Tel: +61 (0) 3 9551 5111

Fax: +61 (0) 3 9551 7217

Email: esales@regentpumps.com.au

www.regentpumps.com.au



All Specifications are subject to change with notice

Reliable Choice