



SANSO MAGNET PUMP

PMD Series

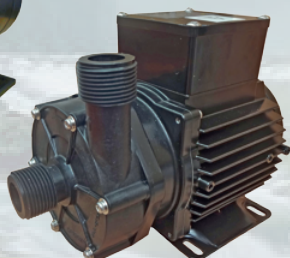
PMD

Made of poly-propylene reinforced by glassfiber

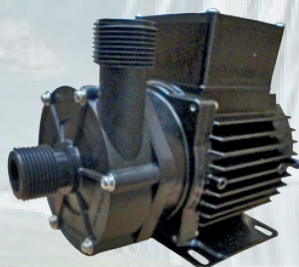
MAGNET PUMP FOR CHEMICAL & SEA WATER



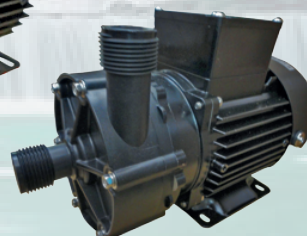
PMD371



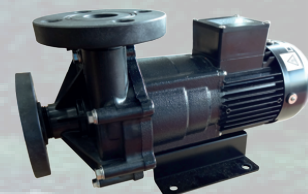
PMD641



PMD1561



PMD2571

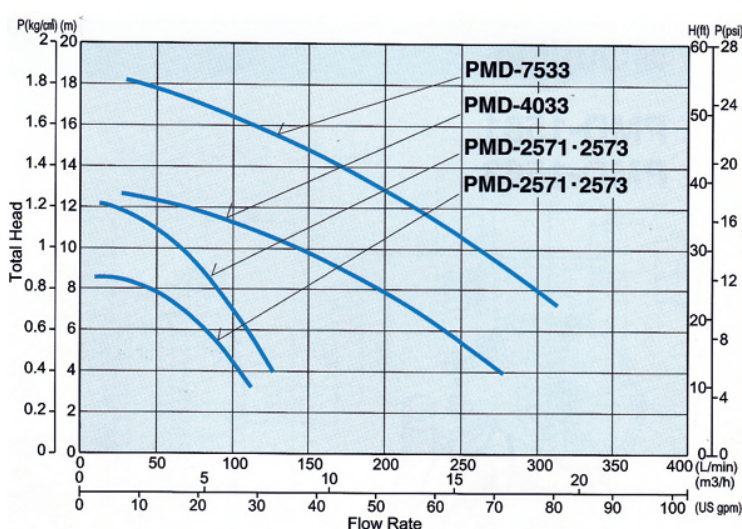
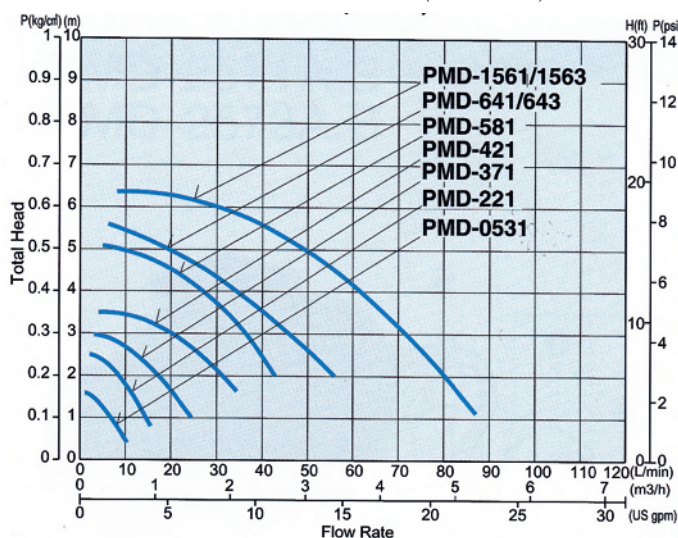


PMD7533

Specification

	PMD371	PMD641	PMD1561	PMD2571	PMD7533
Voltage	220 V	220 V	220 V	220 V	415 V
Frequency	50 Hz	50 Hz	50 Hz	50 Hz	50 Hz
Power	15 W	65 W	120 W	250W	750 W
Max. Flow Rate	25 L/min	62 L/min	87 L/min	125 L/min	380 L/min
Max. Head	3.0 m	5.7 m	6.3 m	12.3 m	18.2 m
Rated Flow Rate	2-18 L/min	3-50 L/min	4-60 L/min	8-75 L/min	12-210 L/min
Weight	1.7 kg	4.8 kg	5.4 kg	8.0 kg	21.0 kg
Diameter Hose	17 A(mm)	26 A(mm)	26 A(mm)	26.5 A(mm)	40 A(mm)

Performance curve (50Hz)



Stock Code :
 881213001A - PMD371
 881213002A - PMD641
 881213003A - PMD1561
 881213010A - PMD2571
 881213006A - PMD7533

• The above flow rates shall be based upon the condition that the water is clean and normal temperature.

• Liquid temperature shall be 60 °C or less.

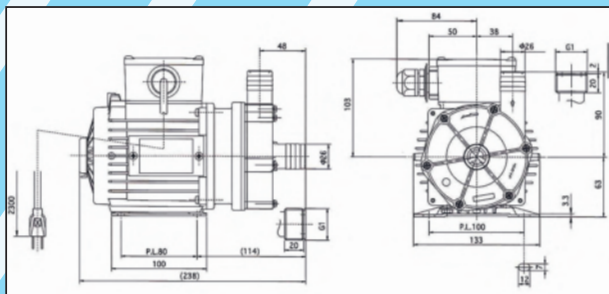
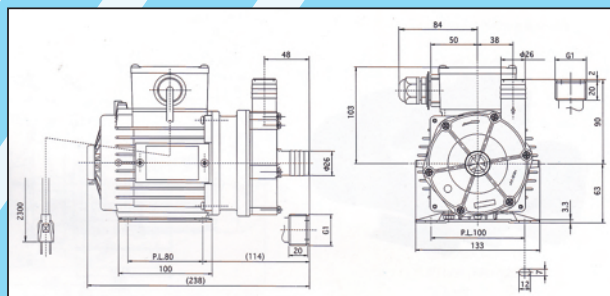
*** Product's specification may subject to change without further notice.
 *** Actual product may slightly differ from pictures shown.

ESM110-Ci
 (29/08/13)

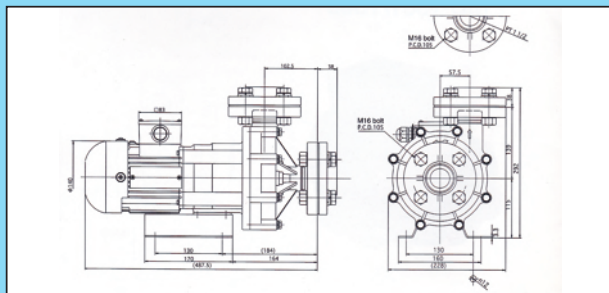
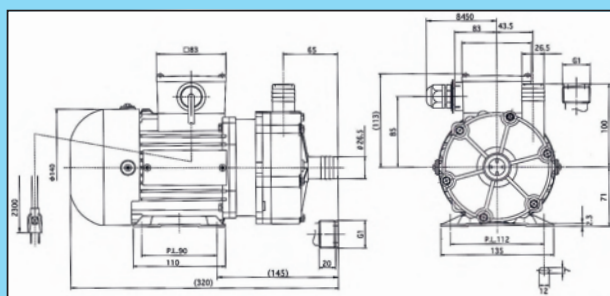


PMD

PMD Made of poly-propylene reinforced by glassfiber
MAGNET PUMP FOR CHEMICAL & SEA WATER



2571



- The above flow rates shall be based upon the condition that the water is clean and normal temperature.
- Liquid temperature shall be 60 °C or less.

*** Product's specification may subject to change without futher notice.
*** Actual product may slightly differ from pictures shown.

ESM110-Cii
(29/08/13)