



Flange Drilling

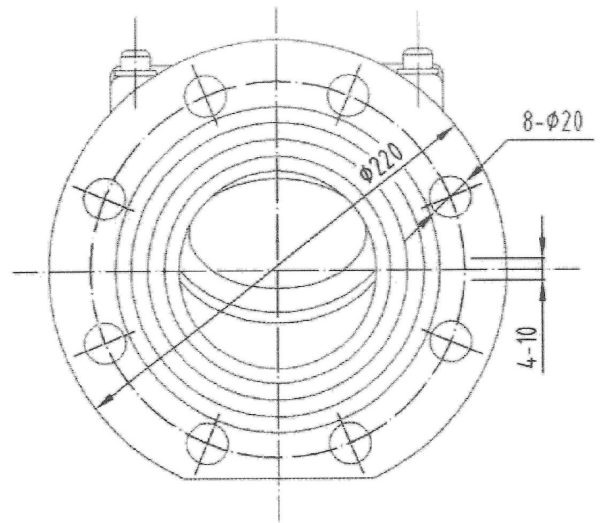
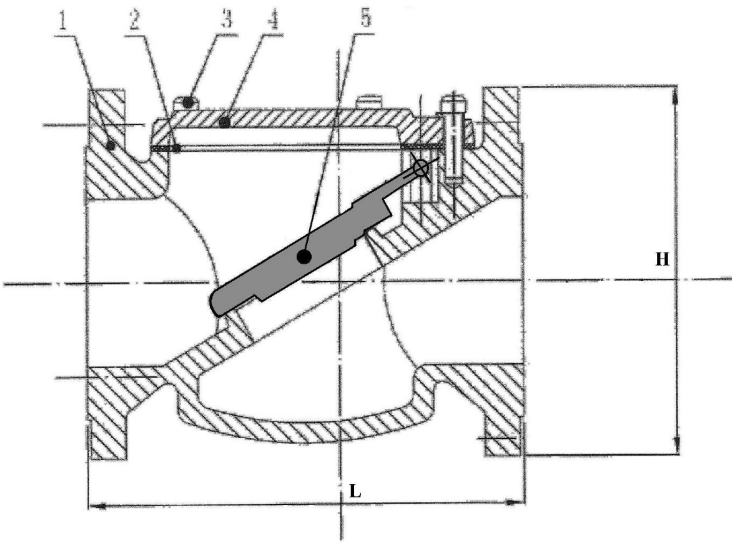
BS 4504 PN16,
other standard on request

Coating

High solid epoxy coating
standard, other coating on
request

Properties

Removable cover on top of
valve body casing for easy
inspection of bearings and
movement of door.



SPECIFICATIONS

No	Part	Material Description
1	Body	Ductile Iron, BS EN 1563 Grade 500/7
2	Gasket	EPDM, BS 2494 Type W / MS 672: 99
3	Cap Bolt	Stainless Steel 304
4	Bonnet	Ductile Iron, BS EN 1563 Grade 500/7
5	Disc	EPDM, BS 2494 Type W / MS 672: 99

DIMENSIONS & WEIGHTS

DN	H	L
80	200	241
100	220	292
150	285	356
200	340	495
250	405	622