



Mixing Tank with Stirrer



Offshore Skid Tank

Stainless Steel Stirrer



Waste Water Treatment



Mixing Tank with Mixer and Mounting Support (Forkliftable Base)



	Model	Diameter mm	Total Ht. mm	Rim Ht. mm	Rim Volume		Standard Accessories
					litres	gals	
1)	CGD- 25	230	600	590	25	5	Loose cover
2)	CGD- 70	350	780	725	70	15	Loose cover
3)	CGD- 100	430	715	680	99	22	Loose cover
4)	CGD- 150	500	850	785	154	34	Loose cover
5)	CGD- 200		1035	985	193	43	Loose cover
6)	CGD- 250	600	960	890	252	55	Loose cover
7)	CGD- 270	650-550	1030	995	292	62	Loose cover
8)	CGD- 650	775	1635	1555	734	161	Loose cover
9)	CGD- 800	820	1650	1560	824	181	Loose cover
10)	CGD- 550	850	1080	1000	560	123	Loose cover
11)	CGD- 350	870	645	570	339	75	Loose cover
12)	CGD- 450		880	820	488	107	Loose cover
13)	CGD- 900		1760	1685	1002	220	Loose cover
14)	CGD- 1000	1160	1170	1080	1142	251	Loose cover
15)	CGD- 1500		1755	1655	1749	385	Loose cover
16)	CGD- 2000		2240	2135	2257	496	Loose cover
17)	CGD- 2500	1500	1525	1400	2474	544	Loose cover
18)	CGD- 3200		1870	1760	3111	684	Loose cover
19)	CGD- 5000		3115	3005	5311	1168	Loose cover
20)	CGD- 4500	1790	1785	1730	4354	958	Loose cover
21)	CGD- 7000		3070	3022	7606	1673	Loose cover
22)	CGD- 6500	1885	2350	2300	6419	1412	Loose cover
23)	COT- 7000	3000	1020	970	6857	1508	Loose cover



Disclaimers:

All figures given in these table are estimates only due to possible shrinkage in the moulding processes.
If dimensions are critical in your application, please re-confirm with manufacturer.



Chemical Industry



Fermentation Tank - Wine Factory

Including...

- Mixing Tanks
- Double Containment Tanks
- Jacketed Tanks
- Dosing Tanks
- IBC's Tanks
- Skid Tanks
- Storage Tanks
- Welded PE Adaptor / Flanges
- Stirrer Mixing System
- Baffle System
- & any other engineering requirement

Chemical Tanks for

- Waste & Water Treatment Industry
- Chemical & Process Industry
- Petrochemical Industry
- Pharmaceutical Industry
- Offshore Industry
- Shipping Industry



Double Containment Tank / Jacketed Tank



IBC Tank - Cylindrical IBC with Forkliftable Base



AE - Dosing Tank



C-DT - Dome Base with Stirrer Mounting Support



C-CT - Conical Base



1000 litres



500 litres

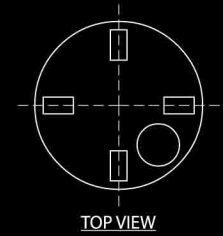
RBS Tank - Rectangular IBC

Custom Made

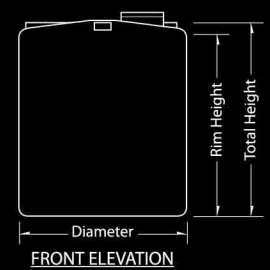


CPE Tank - with dome top

S.G.=1.5



TOP VIEW



FRONT ELEVATION

	Model	Diameter mm	Total Ht. mm	Rim Ht. mm	Rim Volume		Total Volume		Standard Accessories
					litres	gals	litres	gals	
1)	CPE- 400	870	720	630	375	82	402	88	270mm s/cap
2)	CPE- 600		950	860	511	112	538	118	270mm s/cap
3)	CPE- 1000		2075	1985	1180	260	1207	266	450mm m/hole
4)	CPE- 1200	1160	1240	1125	1189	262	1251	275	450mm m/hole
5)	CPE- 1500		1825	1680	1776	391	1854	408	450mm m/hole
6)	CPE- 2000		2355	2240	2368	521	2429	534	450mm m/hole
7)	CPE- 1800	1380	1360	1225	1832	403	1935	426	450mm m/hole
8)	CPE- 2500	1500	1600	1430	2527	556	2680	590	450mm m/hole
9)	CPE- 3200		1940	1770	3128	688	3281	722	450mm m/hole
10)	CPE- 5000		3190	3020	5337	1174	5490	1208	450mm m/hole
11)	CPE- 4500	1790	1950	1750	4404	969	4660	1025	450mm m/hole
12)	CPE- 7500		3200	3000	7550	1661	7806	1717	450mm m/hole
13)	CPE- 6500	1885	2500	2280	6364	1400	6676	1469	450mm m/hole
14)	CPE- 10000S		3790	3575	9978	2195	10283	2262	450mm m/hole
15)	CPE- 8500	2320	2280	1910	8075	1776	8884	1954	450mm m/hole
16)	CPE- 10000M		2600	2290	9682	2130	10353	2277	450mm m/hole
17)	CPE- 10000L		2915	2500	10570	2325	11484	2526	450mm m/hole
18)	CPE- 13000		3200	2830	11965	2632	12774	2810	450mm m/hole
19)	CPE- 18000		4615	4245	17947	3948	18756	4126	450mm m/hole
20)	CPE- 13750	2545	2900	2630	13381	2943	14075	3097	450mm m/hole
21)	CPE- 23500		4760	4480	22793	5014	23517	5173	450mm m/hole
22)	CPE- 28000		5930	5730	29153	6413	29665	6526	450mm m/hole
23)	CPE- 8000	3000	1435	980	6928	1524	8586	1889	450mm m/hole
24)	CPE- 9000		1550	1060	7494	1648	9287	2043	450mm m/hole
25)	CPE- 11000		1890	1435	10145	2232	11802	2596	450mm m/hole
26)	CPE- 12000		2055	1600	11311	2488	12969	2853	450mm m/hole
27)	CPE- 16000		2610	2260	15977	3515	17237	3792	450mm m/hole
28)	CPE- 21000		3345	2920	20643	4541	22185	4880	450mm m/hole
29)	CPE- 25000		3855	3430	24248	5334	25791	5673	450mm m/hole
30)	CPE- 30000		4730	4250	30045	6609	31800	6995	450mm m/hole
31)	CPE- 33000		5170	4715	33333	7332	34990	7697	450mm m/hole
32)	CPE- 40000		5850	5585	39483	8685	40430	8893	450mm m/hole
33)	CPE- 31000	3500	3140	2870	27616	6075	28926	6363	450mm m/hole