

# ALLEN GWYNNES<sup>TM</sup>

**END-SUCTION PUMPS**

AGP SERIES / AGL SERIES  
Solid Handling Pump





## STANDARD FEATURES

Spare parts stocking is cut to minimum through high interchangeability of manufactured components. The standard casing mounted arrangement feature " BACK PULL-OUT " , the End shaft diameter are design to fit the taper lock Pully. An Alternative bearing bracket mounted arrangement can be supplied to suit various discharge position.

### Casing

*High efficiency volute with self-venting vertical centre line discharge. The impeller and casing is equal at all the point. This kind of design is help to reduce turbulence, cavitation. This design can benefit casing life is greatly extended especially in abrasive service.*

### Impeller

*Semi-open impeller is a compromise between an open and an enclosed impeller. It incorporates a single shroud, usually located on the back of the impeller. Semi-open impeller operates more efficiently than an enclosed impeller because of lower disc friction and tighter axial clearances .This impeller is suitable for handling solid application.*

### Shaft

*Large diameter shaft design to take full load stresses with minimum deflection. Fully machined and ground section where fine finishing and dimensional tolerance are critical. The shaft end design is benefit for taper lock pully.*

### Bearing

*Two identical bearings sized for long running life under maximum load operation. Grease lubrication is standard.*

### Bearing Housing

*Sturdy design to ensure rigidity and vibration-free operation.*



# Pump name plate information:

## ALLEN GWYNNES NIMBUS PUMP

<b>PUMP SIZE</b>			
<b>SERIAL NO.</b>	WM		
<b>IMPELLER SIZE</b>			
<b>MATERIAL</b>			

**PUMP SIZE**

a	b	c
---	---	---

### Model range

A : Allen  
G : Gwynnes  
P : Process Pumps

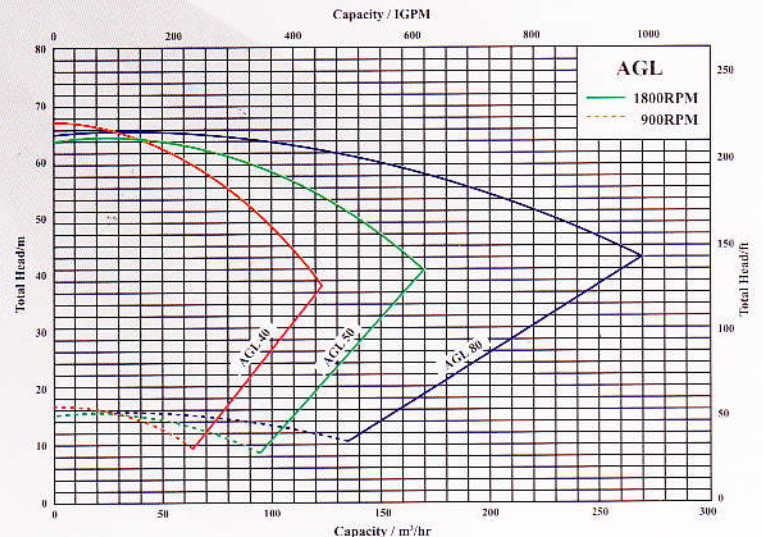
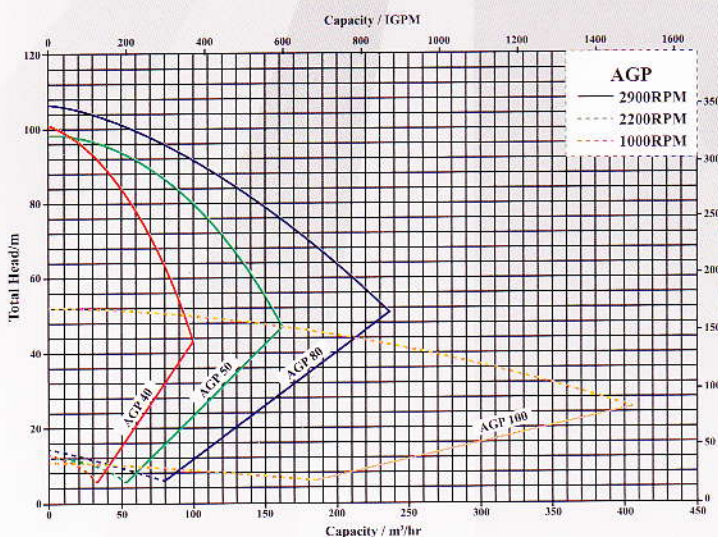
### Model Size

40mm: Nominal discharge diameter 40  
50mm: Nominal discharge diameter 50  
80mm: Nominal discharge diameter 80  
100mm: Nominal discharge diameter 100

### Market

P : Palm oil  
G : General industrial  
A : Agriculture and other

## RANGE CHART



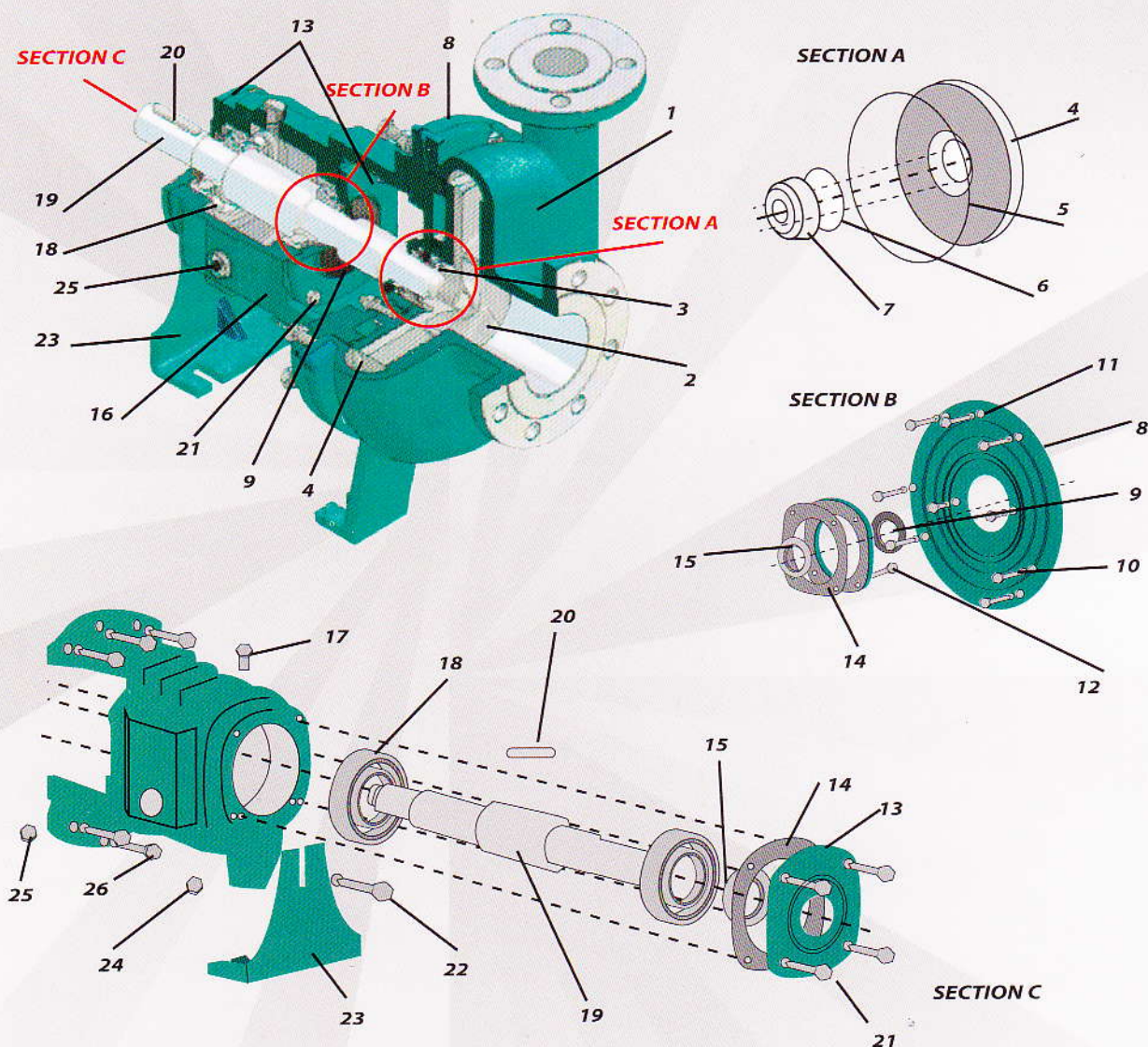
### Remark:

1. AGP 40 to AGP 80 (semi open impeller)
2. AGL 40 to AGL 80 (semi open impeller)
3. AGP 100 is open impeller
4. All the pumps is full size impeller
5. Curves for reference, final selection please refer to individual performance curve.



# Mechanical Seal Type

## PART LIST



Item No.	Description	Standard Material
1	Casing	CI/DI/CA15/SS/SS316
2	Semi-open Impeller	CI/DI/CA15/SS/SS316
3	Mechanical Seal	CARBON VS CERAMIC/SIC VS SIC
4	Ms Cover	CI/DI/CA15/SS/SS316
5	O-ring Ms Cover	SR
6	O-ring Chamber	SR
7	Chamber	SS
8	Back Cover	CI/DI/CA15/SS/SS316
9	V-ring	SR
10	Srew Back Cover	STEEL
11	Back Cover Nut	STEEL
12	Screw End Cover	STEEL

Item No.	Description	Standard Material
13	Bearing End Cover	CI
14	Bearing End Cover Gasket	AS
15	Oil Seal	SR
16	Bearing Bracket	CI
17	Oil Cover	ALUMINIUM ALLOY
18	Bearing	STEEL
19	Shalf	SS 304/SS 316
20	Key Shaft	SS 304
21	Screw Bearing End Cover	STEEL
22	Screw Bracket Reinforcement	STEEL
23	Bracket Reinforcement	CI
24	Cover Bearing Bracket	GS
25	Oil Gauge	PLASTIC

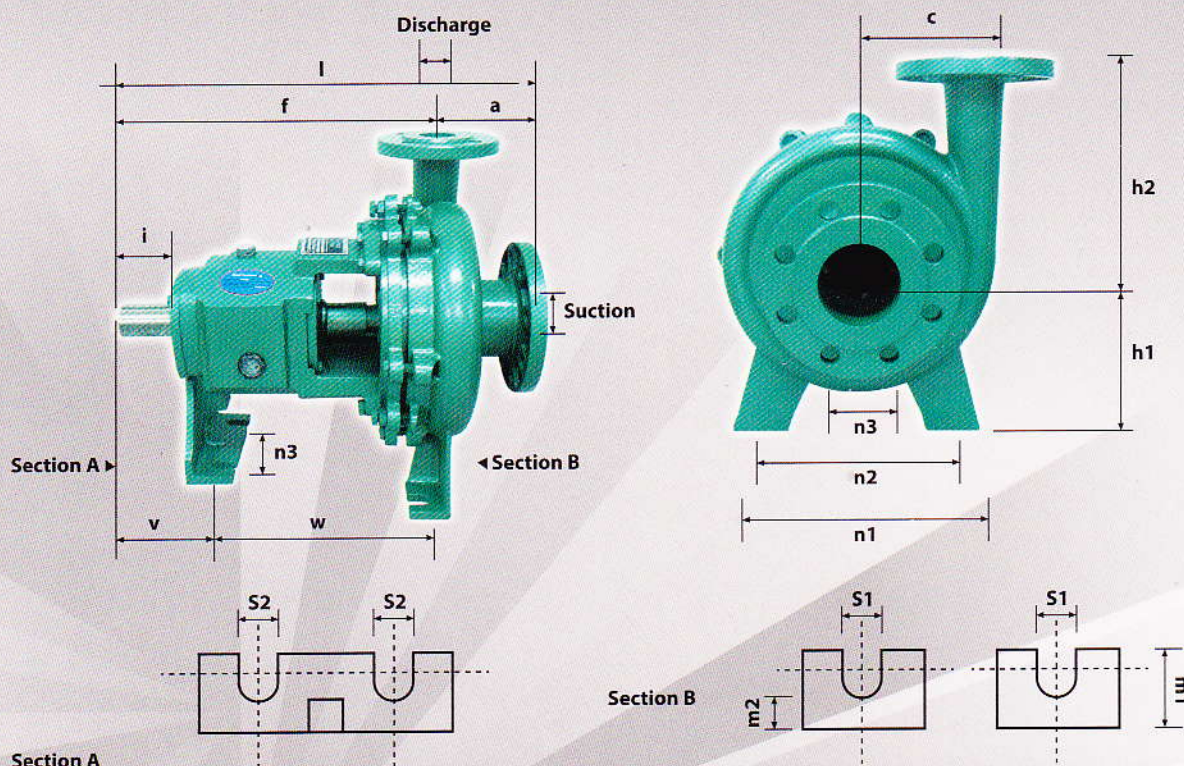
Remark:  
 SS-Stainless steel  
 CI-Cast Iron  
 SR-Synthetic Rubber

AS-Asbestos Sheet  
 GS-Galvenise Steel  
 DI-Ductile Iron

ALLEN GWYNNE'S



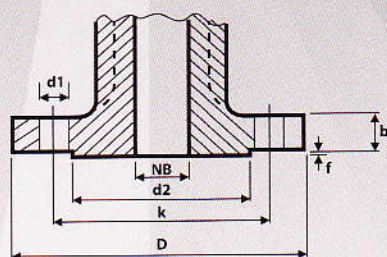
## Pumps MOUNTING



Dimensions in mm																				
PUMP MODEL	Flanges		Pump Dimensions						Foot Dimensions										Shaft End	
	Suction	Discharge	a	f	l	h1	h2	c	b	m1	m2	n1	n2	n3	s1	s2	v	w	l	
AGP 40	65	40	85	430	515	210	203	135	75	55	35	300	245	110	18	14	130	265	80	
AGP 50	80	50	115	430	545		215	123												
AGP 80	100	80	115	440	555		242	130												
AGP 100	125	100	125	445	570	250	262	148	75	55	35	380	310	185	18	14	140	255	80	
AGL 40	65	40	90	430	520		254	165												
AGL 50	80	50	120	435	555		256	163												
AGL 80	100	80	115	440	555		260	161												

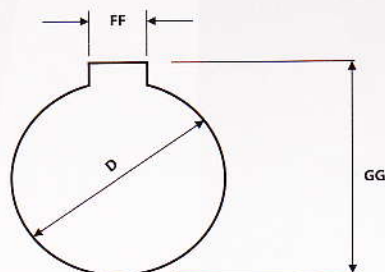
- Remark: 1. Dimensions are based on semi-open / fully-open impeller  
 2. For closed impeller, dimensions f, c and w plus (+) another 6mm  
 3. For torque flow impeller, dimensions f, c and w plus (+) another 30mm

## FLANGES DETAILS



NOMINAL BORE	FLANGE		RAISED FACE		BOLTING	DRILLING		
NB	D	b	d2	f		NO	d1	k
40	150	18	88	3	M16	4	18	110
50	165	20	102	3	M16	4	18	125
65	185	20	122	3	M16	4	18	145
80	200	22	138	3	M16	8	18	160
100	220	24	158	3	M16	8	18	180
125	250	26	188	3	M16	8	18	210

## COUPLING BORE DETAILS



D (H7)	GG	FF
0 42 + 0.025	0 45.3 + 0.2	12 ± 0.0215





**ALLEN <sup>TM</sup>  
GWYNNES**

[www.allengwynnes.com.my](http://www.allengwynnes.com.my)

Authorised Dealer :